



# Linkwerks™

FLOORING SOLUTIONS FROM EARTHWERKS

## Rapid Clic™

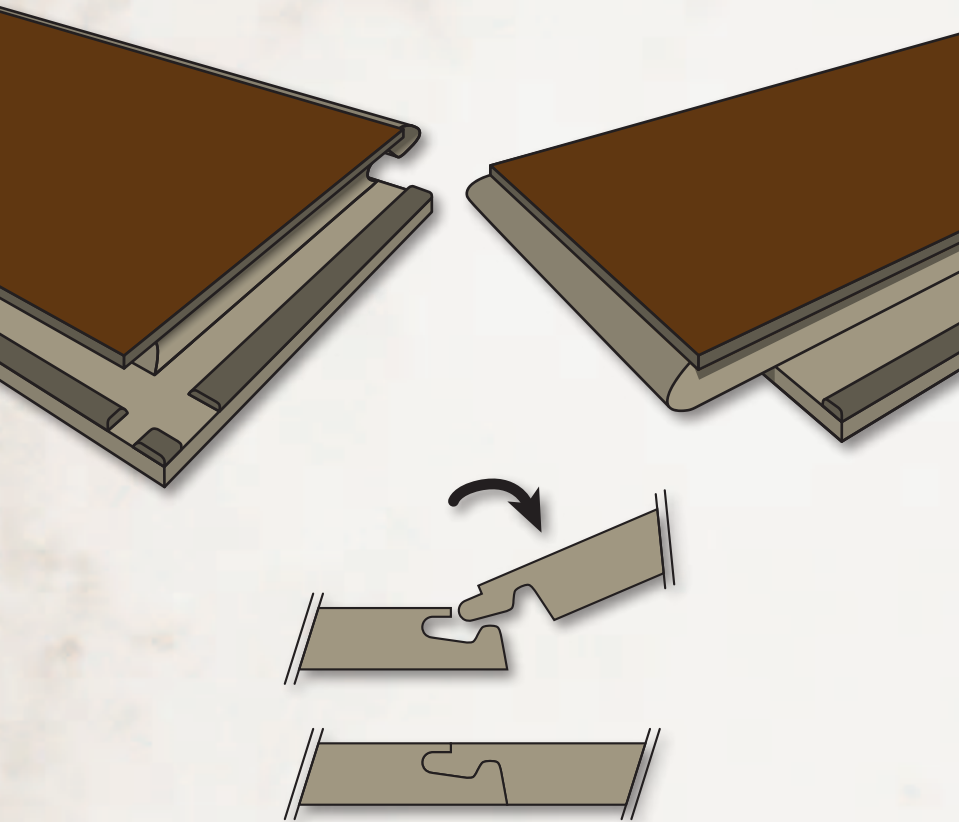
floating luxury vinyl plank



## Accu Clic™

floating luxury vinyl plank & tile

earthwerks  
FLOORING INSPIRED BY NATURE



## Rapid Clic™ Floating Luxury Vinyl Plank

**DIMENSIONS:** (nominal) 7" x 48" x 1/5" x 20mil wear layer  
177.8mm x 1219.2mm x 5.0mm x 0.50mm wear layer  
4-sided Beveled Edge

**PACKING:** 8 pc/ctn • 17.88 ft<sup>2</sup>/ctn • 1.66m<sup>2</sup>/ctn  
32.5 lbs/ctn • 14.76 kg/ctn • 70 ctn/pallet

**WEAR LIMITED WARRANTY:** Lifetime Residential / 10-Year Commercial  
Produced under License of Flooring Industries™, the Unilin IP company.

---

## Accu Clic™ Floating Luxury Vinyl Plank & Tile

**PLANK:** (nominal) 6" x 36" x 1/6" • 152.4mm x 914.4mm x 4.0mm  
16 pc/ctn • 22.79 ft<sup>2</sup>/ctn • 2.12m<sup>2</sup>/ctn  
32.38 lbs/ctn • 14.69 kg/ctn • 60 ctn/pallet  
4-sided Micro-Beveled Edge

**TILE:** (nominal) 12" x 24" x 1/6" • 304.8mm x 609.6mm x 4.0mm  
12 pc/ctn • 23.23 ft<sup>2</sup>/ctn • 2.16m<sup>2</sup>/ctn  
32.89 lbs/ctn • 14.92 kg/ctn • 72 ctn/pallet  
4-sided Micro-Beveled Edge

**WEAR LIMITED WARRANTY:** 25-Year Residential / 6-Year Light Commercial  
Produced under License of Flooring Industries™, the Unilin IP company.



# Linkwerks™

FLOORING SOLUTIONS FROM EARTHWERKS

---

LinkWerks™ floating Luxury Vinyl plank and tile clicks on so many levels. Beautiful to behold, durable and quietly comfortable for all who trek across it.

Think about areas in your home, office or retail setting that need a new look.

LinkWerks™ is the perfect solution.

Easy to install, easy to maintain and easy to own.

Built with Unilin's glueless click technology, you can choose Rapid Clic™ (7" x 48" planks) or Accu Clic™ (6" x 36" planks or 12" x 24" tiles). Both are designed with the inspired-by-nature beauty that is the hallmark of all EarthWerks™ flooring. Now that clicks with everybody.

# Rapid Clic™

---

LWC 4810

LWC 4811



Glueless Unilin Click System

Elegant 4-sided Beveled Edge

DIMENSIONS: (nominal) 7" x 48" x 1/5" x 20mil wear layer

177.8mm x 1219.2mm x 5.0mm x 0.50mm wear layer

WEAR LIMITED WARRANTY: Lifetime Residential / 10-Year Commercial



Rapid Clic™ | LWC 4810

# Rapid Clic™

---

LWC 4812

LWC 4813



Glueless Unilin Click System

Elegant 4-sided Beveled Edge

DIMENSIONS: (nominal) 7" x 48" x 1/5" x 20mil wear layer

177.8mm x 1219.2mm x 5.0mm x 0.50mm wear layer

WEAR LIMITED WARRANTY: Lifetime Residential / 10-Year Commercial



# Rapid Clic™

---

LWC 4814

LWC 4816



Glueless Unilin Click System

Elegant 4-sided Beveled Edge

DIMENSIONS: (nominal) 7" x 48" x 1/5" x 20mil wear layer

177.8mm x 1219.2mm x 5.0mm x 0.50mm wear layer

WEAR LIMITED WARRANTY: Lifetime Residential / 10-Year Commercial





Rapid Clic™ | LWC 4814

# Rapid Clic™

---

LWC 4815

LWC 4817



Glueless Unilin Click System

Elegant 4-sided Beveled Edge

DIMENSIONS: (nominal) 7" x 48" x 1/5" x 20mil wear layer

177.8mm x 1219.2mm x 5.0mm x 0.50mm wear layer

WEAR LIMITED WARRANTY: Lifetime Residential / 10-Year Commercial



# Rapid Clic™

---

LWC 4818

LWC 4819



Glueless Unilin Click System

Elegant 4-sided Beveled Edge

DIMENSIONS: (nominal) 7" x 48" x 1/5" x 20mil wear layer

177.8mm x 1219.2mm x 5.0mm x 0.50mm wear layer

WEAR LIMITED WARRANTY: Lifetime Residential / 10-Year Commercial



**Accu Clic™**





Accu Clic™ | LWA 1251



Glueless Unilin Click System

Distinctive 4-sided Micro-Beveled Edge

DIMENSIONS: (nominal) 12" x 24" x 1/6"

304.8mm x 609.6mm x 4.0mm

WEAR LIMITED WARRANTY: 25-Year Residential / 6-Year Light Commercial

# Accu Clic™

---

LWA 3620

LWA 3621



Glueless Unilin Click System

Distinctive 4-sided Micro-Beveled Edge

DIMENSIONS: (nominal) 6" x 36" x 1/6"

152.4mm x 914.4mm x 4.0mm

WEAR LIMITED WARRANTY: 25-Year Residential / 6-Year Light Commercial





# Accu Clic™

---

LWA 3622

LWA 3625



Glueless Unilin Click System

Distinctive 4-sided Micro-Beveled Edge

DIMENSIONS: (nominal) 6" x 36" x 1/6"

152.4mm x 914.4mm x 4.0mm

WEAR LIMITED WARRANTY: 25-Year Residential / 6-Year Light Commercial



Accu Clic™ | LWA 3622



Accu Clic™ | LWA 3625

# Accu Clic™

---

LWA 3623

LWA 3624



Glueless Unilin Click System

Distinctive 4-sided Micro-Beveled Edge

DIMENSIONS: (nominal) 6" x 36" x 1/6"

152.4mm x 914.4mm x 4.0mm

WEAR LIMITED WARRANTY: 25-Year Residential / 6-Year Light Commercial



# Accu Clic™

---

LWA 3626

LWA 3627



Glueless Unilin Click System

Distinctive 4-sided Micro-Beveled Edge

DIMENSIONS: (nominal) 6" x 36" x 1/6"

152.4mm x 914.4mm x 4.0mm

WEAR LIMITED WARRANTY: 25-Year Residential / 6-Year Light Commercial



Accu Clic™ | LWA 3627

# Accu Clic™

---

LWA 3628

LWA 3629



Glueless Unilin Click System

Distinctive 4-sided Micro-Beveled Edge

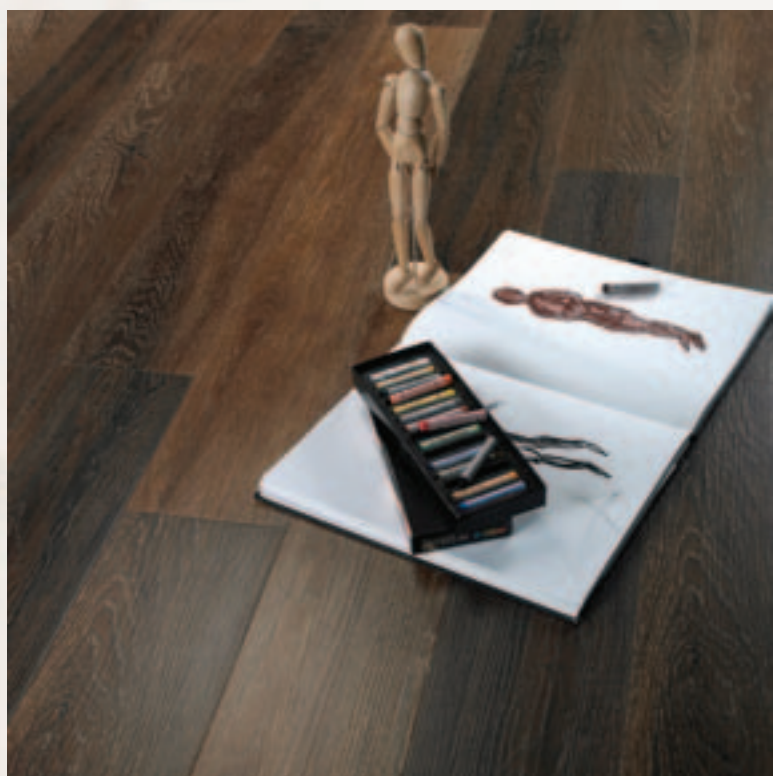
DIMENSIONS: (nominal) 6" x 36" x 1/6"

152.4mm x 914.4mm x 4.0mm

WEAR LIMITED WARRANTY: 25-Year Residential / 6-Year Light Commercial









#### **EXCLUSIVE LIMITED WARRANTY**

EarthWerks provides a one (1) year Limited Warranty that the EarthWerks Luxury Vinyl product is free of any manufacturing defects. If such products are found to be defective, EarthWerks will supply new products of the same or similar style, size, color, grade and gauge for repair or replacement of the defective area and will pay reasonable labor cost if it was professionally installed. Non defective products that were damaged by improper installation would not constitute a valid claim under this Limited Warranty. EarthWerks reserves the right to inspect any claim, request photographs and/or samples prior to approving such claim.

#### **PRE-INSTALLATION LIMITED WARRANTY**

EarthWerks warrants that this product is free of visual defects. You and/or your installer should carefully inspect each piece before installation. Any pieces that appear to have defects should not be installed. EarthWerks will not be responsible for any claim for product installed with visual defects.

#### **WEAR LIMITED WARRANTY**

EarthWerks™ Luxury Vinyl is protected with a wear layer. EarthWerks warrants that there will be no wear-through of the wear layer for the amount of years indicated for the specific product. "Wear-through" means complete loss of the wear layer so that the printed layer is changed or affected. The term of your specific product wear Limited Warranty will appear on the website [www.earthwerks.net](http://www.earthwerks.net) in the Limited Warranty section. This Limited Warranty only applies provided the recommended installation and maintenance procedures are followed. For complete details on the EarthWerks Limited Warranty and installation instructions and maintenance recommendations, please refer to the website at [www.earthwerks.net](http://www.earthwerks.net) or review the Installation/Maintenance and Limited Warranty brochure which is available prior to sale, the terms of which are hereby agreed to have been included in all sales contracts for this product.

*To obtain a warranty claim form and/or information, you may call 1-800-979-7943 (Attention: Claims Department). Any claim under this Limited Warranty must include a claim form properly filled out accompanied by a dated proof of purchase or invoice. THIS LIMITED WARRANTY GIVES YOU SPECIFIC LEGAL RIGHTS. YOU MAY HAVE OTHER RIGHTS THAT VARY FROM STATE TO STATE.*

*For complete details on our maintenance and limited warranty, please visit our website at [www.earthwerks.net](http://www.earthwerks.net), or it is available upon request by mailing to EarthWerks, PO Box 9095, Corpus Christi, TX 78469-9095.*

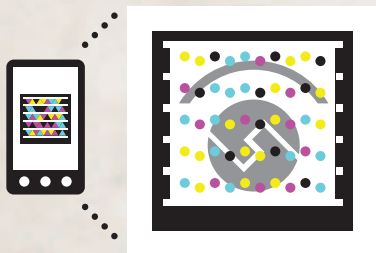




# Linkwerks™

FLOORING SOLUTIONS FROM EARTHWERKS

For more information on LinkWerks, go to  
<http://gettag.mobi>  
on any smartphone for the free app.  
Install, scan this tag and enjoy!



earthwerks  
FLOORING INSPIRED BY NATURE

800-275-7943 • [www.earthwerks.com](http://www.earthwerks.com)

EW1LWB602