

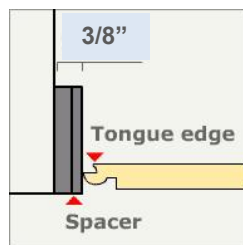
Installation & Care Guide

BEFORE INSTALLATION

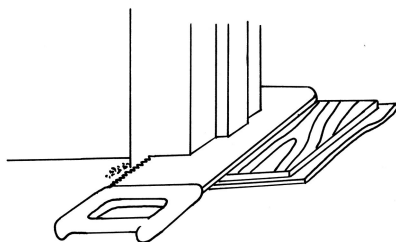
1. **Read all instructions as follows and included in boxes of flooring**
2. **Material requirements**
 - Estimate square footage and add 10%.
 - Select underlayment (over concrete or in moisture prone areas include vapour barrier).
3. **Acclimation**
 - Store unopened boxes flat for 48 hours in centre of room where installation will take place.
4. **Minimum Plank Size**
 - Calculate how many planks wide your room is and ensure the last row is at least 4" wide; if not, cut the first row so that the last row will end up wider than 4".
 - Calculate how many planks long your room is and ensure the last plank of the first row is at least 16" long; if not cut 16" off the first plank.
5. **Room Dimensions**
 - T-Mouldings must be used in installations that are larger than 36' in plank length or 16' in plank width and to separate rooms.

INSTALLATION

1. **NEVER USE A TAP BLOCK OR TOOL DESIGNED FOR OTHER LAMINATE FLOORS.**
2. **NEVER ADHERE YOUR LAMINATE FLOOR TO THE SUBFLOOR.**
3. Inspect planks for edge and surface damage before installing. Never install damaged planks.
4. Select starting corner, work left to right to allow tongue into groove installation.
5. Leave a 3/8" space between the floors and walls or any vertical objects.



6. Undercut your door jambs if necessary (use underlay and flooring plank as guide for height).



Use a cut plank and small sample of underlay to determine height of jamb

7. Install vapour barrier (if installing over concrete or in moisture prone area) and underlay.
8. Install floors (see reverse).
9. Finish by installing mouldings and trims.

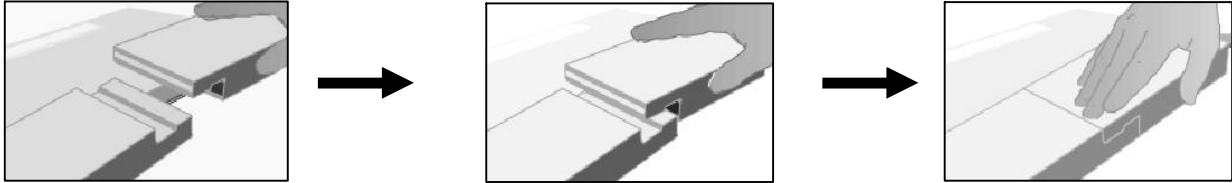
Installing in moisture prone areas

1. Install a vapour barrier. Overlap its seams and use a moisture resistant tape to seal them.
2. Install your underlay and fold it 2" up the wall.
3. Fill the expansion space around the perimeter of the floor and any pipes, etc. with 100% silicone caulk and cover up with base boards, quarter rounds or the appropriate trim.

CONNECTING THE PLANKS

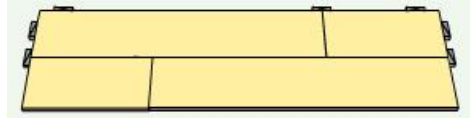
1. First Row

1. Lay the first plank with the tongue facing the wall, then bring the second plank so that its short end tongue sits on top of the previous plank's groove. Apply downward pressure on the joint to ensure that the planks lock together. Continue in this manner until the first row is complete.

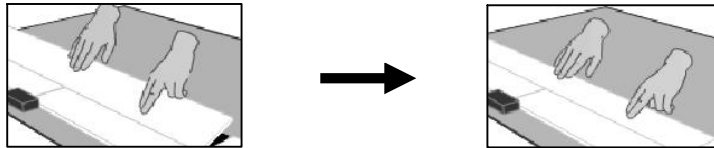


2. Second and Remaining Rows

- To start the second row use the remainder of the last plank of the first row if it is longer than 16" long, otherwise cut a new plank in half and proceed. To ensure the structural integrity of your floor **ALWAYS STAGGER END-SEAMS FROM ROW TO ROW AT LEAST 16"**.



- Install the first plank of the second row by installing its long edge to the previous row's groove. To do this, simply insert the plank's tongue into the previous row's groove while holding it at a 30 degree angle. Lower the plank to lock it to the previous row.

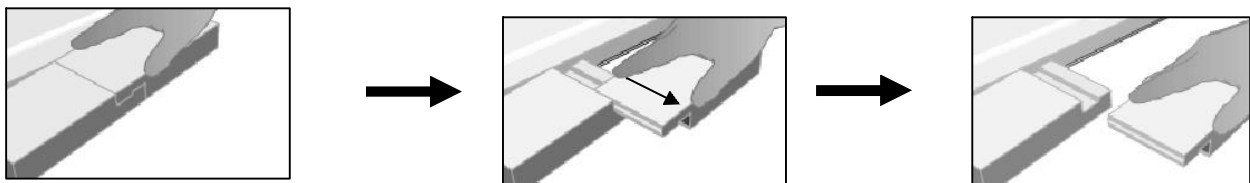


- Install the remaining planks in the same manner while at the same time, locking the short ends in the same process as was used for the first row.

DISCONNECTING THE PLANKS

To uninstall planks:

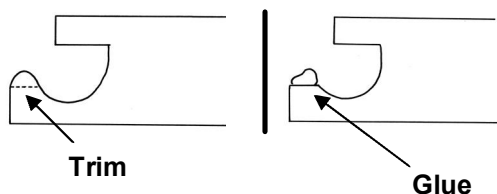
1. Uninstall one whole row at a time by lifting the whole row at a 30 degree angle and sliding it away.
2. Uninstall individual planks by sliding them horizontally (flat) apart.



Installation where a plank cannot be angled

In instances where planks cannot be connected in the manner described above, you will need to connect them by horizontally sliding one into another. To do so:

1. Using a utility knife or chisel, cut approximately 2mm (1/8") off of the lip of the long-edge groove of the plank.



2. Place a small bead of glue, approximately 1/8", on the groove of the planks.
3. Connect the short ends in the manner described above.
4. Horizontally slide the plank towards the previous row.
5. Wipe up any glue residue with a damp cloth immediately.

CARE AND MAINTENANCE

Armada laminate floors are among the highest performing floors available, but they are not indestructible and minor cosmetic scuffing is normal wear for any laminate floor. To ensure your floors perform as well in the future as they do the day after you install them:

- Place walk off mats and area rugs at main traffic entrances and protective pads under furniture legs to prevent scratching.
- Vacuum or dust mop to remove loose dirt or grit.
- Never flood the floor with water or cleaner; wipe up spills immediately.
- Do not use polishes, waxes or abrasive cleaners.